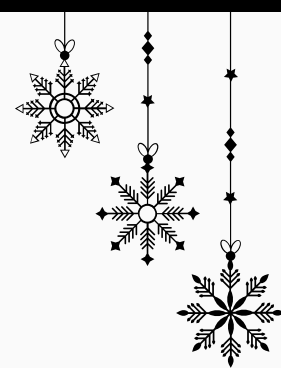


CHIT CHAT

Lothian Care Home and Integrated Teams Chat



Welcome...

To this special flash addition of the winter CHIT CHAT newsletter.

Have you an innovative project you would like to share with others? Or would you like some support with an improvement initiative? If so, please contact the Quality Improvement Team on: loth.carehomesqstandards@nhs.scot

Spotlight on: Preparing for Winter

Health and Social Care staff with respiratory symptoms should adhere to NHS Inform advice on managing symptoms of respiratory infection rather than seek a test. Individuals with certain health conditions who are still eligible to test and should seek this through NHS Inform.

During a suspected outbreak the Health Protection Team (HPT) will request that the setting carry out up to a maximum of 5 PCR tests on symptomatic residents. Asymptomatic residents should not be tested unless otherwise advised by HPT. LFD tests should no longer be used as these only test for Covid-19 and will not pick up any other respiratory illness that may circulate over winter.

This Issue:

WELCOME

SPOTLIGHT ON:
PREPARING FOR WINTER

PAGE 01

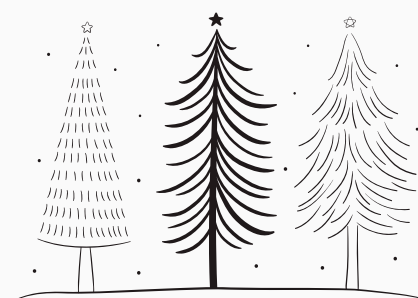
2023/24 LOTHIAN CARE
HOME ANNUAL REPORT

LOTHIAN CARE
ACADEMY

CARE HOMES AND CARE
AT HOME CONFERENCE
2024

MALNUTRITION
AWARENESS WEEK - GET
INVOLVED!

PAGE 02



Care Home Infection Prevention and Control Manual (CH IPCM)

You can access the Care Home Infection Prevention Control Manual for Care Homes at <https://nipcm.hps.scot.nhs.uk/care-home-infection-prevention-and-control-manual-ch-ipcm/> or by scanning the QR Code.





2023/24 LOTHIAN CARE HOME ANNUAL REPORT

Throughout 2023/24 we have continued to build on or collaborative arrangements with Lothian Care Homes and Care at Home services by: Strengthening our multiagency collaborative working with partners and key stakeholders. Working together to support innovation and improvement to meet the recommendations in My Health, My Care, My Home - healthcare framework for adults living in Care Homes (SG, June 2022).

Continuing to invest in teams and resources to support the sector. Continuing to embed our operational, strategic and governance arrangements. Engaged and shared learning locally, regionally and nationally.

If you would like to read the full report please contact loth.carehomes@nhs.scot

LOTHIAN CARE ACADEMY

The Lothian Care Academy continues to expand and evolve to signpost education opportunities across health and social care.

A full directory can be accessed online at <https://services.nhslothian.scot/carehomes/education-and-training/> or scan the QR Code



CARE HOMES AND CARE AT HOME ONLINE CONFERENCE 2024

Lothian hosted its second dedicated Care Homes and Care at Home Conference online on 3rd October 2024.

The conference was a celebration of the work happening and many took the opportunity to share projects, good practice and experiences within Care Homes and Care at Home services throughout Lothian and Nationally with our delegates.

It was an excellent day and thank you to everyone who attended and took part in the conference. For more information please visit <https://services.nhslothian.scot/carehomes/care-home-and-care-at-home-conference-2024/> or scan the QR code



Malnutrition Awareness Week – How to Get Involved!

BAPEN is encouraging care homes to participate in the National Malnutrition Screening Survey, which opens on 1st November. You can participate and find out more by visiting <https://www.bapen.org.uk/malnutrition/uk-malnutrition-awareness-week/> or by scanning the QR Code.

