

**Team Leader
/Senior Social Care
Worker**



Care Home

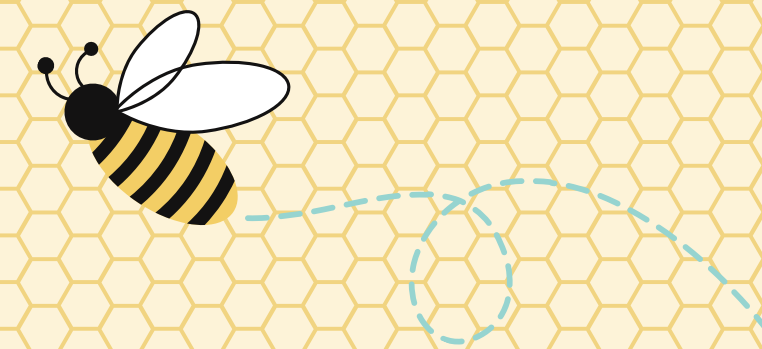
Role Outline

This role focusses on ensuring care is delivered to residents according to their care plan.

You will also supervise staff and ensure that the care delivered meets the health and social care standards.

You may also take on some more managerial tasks as part of this role.

You'll be supported by your manager and have more responsibility for either a group of staff, or an area within the care home.



Benefits of the Role

This role suits people who are good at people management and ensuring standards are embedded into the ways of working.

This is a great progression where you're still able to speak directly with residents and families alongside taking on additional responsibilities.

This is a fantastic role for supporting and supervising staff and taking a wider view of how the care home is managed.

You'll likely receive additional training to undertake this role.

If you are working in a nursing home, you'll be working alongside the nurse.

If you're in a residential home, this role leads team members and manages the overall care, as well as delegating to team members and taking on more of a leadership role.

You would be good in this role if you:

Have good people skills and people management experience

Have a good working knowledge of standards and regulation

Are able to multi-task and prioritise

Able to work with a wide variety of people

Good organisational skills and time management

Qualifications Required

Depending on where you work, you might be supported to obtain your SVQ Level 4 or a Higher National Certificate (HNC) and Scottish Vocational Qualification (SVQ) level 3 in Social Care.

