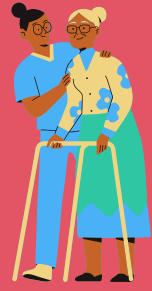


**Senior Care
Assistant/Social
Care Worker**



Care Home

Role Outline

This role continues to deliver personalised care but also looks at supporting other staff.

This could look like developing and supporting staff, arranging resident reviews, making sure shared decision-making is taking place and having a more active role in the running of the care home.

You will continue to work closely with residents and families, having meaningful relationships at the centre of your work.

You may also have an increased awareness and responsibility for dementia or palliative care in this role.

Benefits of the Role

This role is great if you're looking for more responsibility and passionate about supporting staff and quality improvement.

You'll continue to work with residents to make a positive difference to people's lives.

You'll be able to upskill in areas such as mentorship in this role too and have more independence in your role.

This role is a natural progression where you will be involved in more complex tasks and decision making, and have the opportunity to support other staff as part of this role.

Qualifications Required

If you do not already have an SVQ Level 3, your employer will help you achieve this. You may also be supported through your HNC qualification in Social Care - or through your SVQ Level 3 in Social Care/ HNC/SVQ for Health Support Workers

You would be good in this role if you:

Like making meaningful relationships with people and enjoy helping others

Are able to keep calm in stressful situations

Are hands-on and practical

Are a people person with good communication skills

Able to use initiative and are compassionate

Able to work flexibly and as part of a wider team

Able to keep things confidential

Enjoy working independently

Are kind and compassionate

Enjoy working as part of a team structure

Like to take on additional responsibilities and challenges

