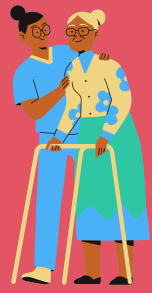


Care Assistant



Care Home

Benefits of the Role

This is a fantastic entry level position where you will work independently and be supported by more senior members of staff.

This role suits people who like working as part of a team to deliver care. This role is extremely rewarding and focusses on building meaningful relationships with residents.

Working in a care home, you'll be working with other care staff to deliver care plans. You'll also work alongside members of staff to make a positive difference to peoples lives. You'll receive your uniform and education, training and support as part of this role.

You might work in a few different settings such as day care.

You'll complete a variety of tasks and be supported to complete appropriate education and training, including an SVQ if required.

Role Outline

This role focusses on providing a safe and healthy environment for residents and staff.

You will follow a care plan and support residents to live as independantly as possible

You may administer medications as well as helping people to dress, wash themselves and with their mobility.

You might also work with other teams or organisations to support the resident further.

You may work with residents who have dementia or challenging behaviour.

Depending on where you work, you might do some more complex tasks but you will need to check individual role descriptions for more information.

Qualifications Required

If you do not already have an SVQ Level 2, your employer will support you to achieve this.



You would be good in this role if you:

Like making meaningful relationships with people and enjoy helping others.

Are able to keep calm in stressful situations

Are hands-on and practical

Are a people person with good communication skills

Able to use initiative and are compassionate

Able to work flexibly and as part of a wider team

Able to keep things confidential

Enjoy working independently

Are kind and compassionate

Enjoy working as part of a team structure

