

ENRICH Scotland

Enabling Research In Care Homes

Dr Maria Drummond

Dr Emma Law

Irina McLean

Dr Rosie Ashworth

Helen Davidson

Fleur Davey

Andrew Gibson

Professor Susan Shenkin

Bernie McInally

Lesley Cousland

Diane Frew

Kirsty Hynes

Maureen Brown

Anna Crawford





Webinar Series



Today's talk is part of a new webinar series between ENRICH Scotland and NRS Neuroprogressive and Dementia Network

The focus of the webinars has been informed by our work with RICH Voices and Partners in Research - the 'patient and public involvement' groups for the two organisations.

If there are any topics or speakers you would be interested in hearing from in the future, or you would like to present your work, please get in touch with us on tay.ppipartners@nhs.scot

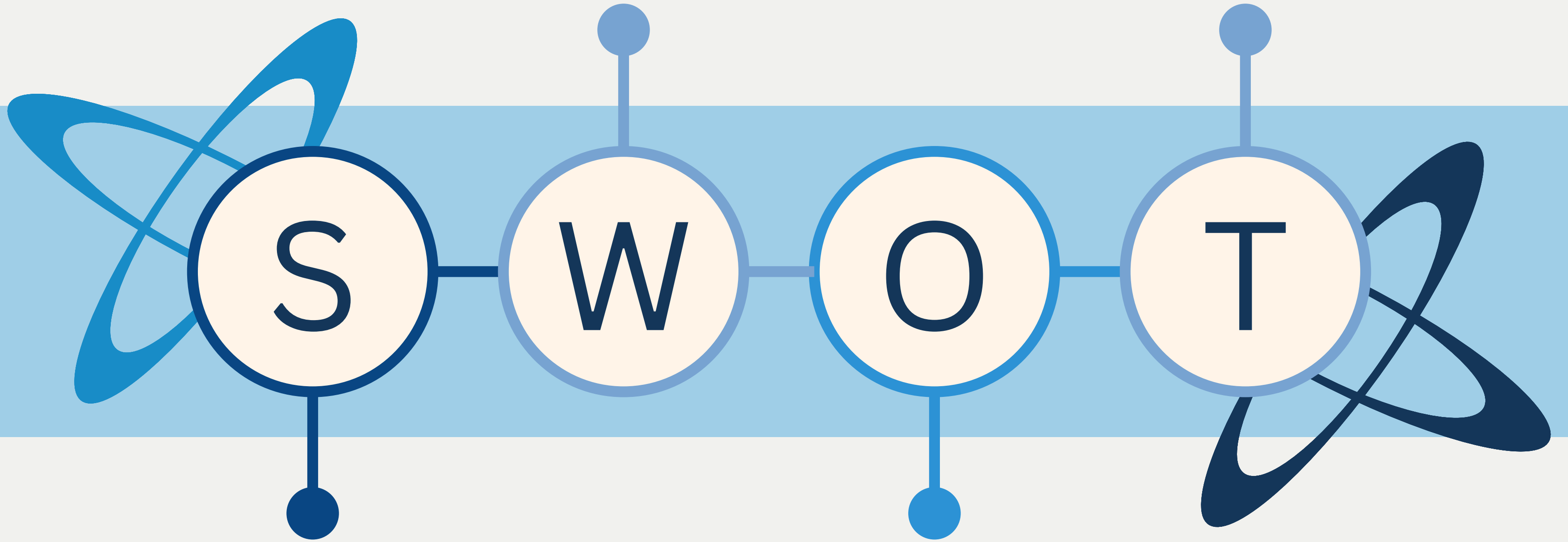
Table Of Contents

01	: Introduction	Q	07	: Research Support	Q
02	: Strengths	Q	08	: Case Study 1	Q
03	: Weaknesses	Q	09	: Current Studies	Q
04	: Opportunities	Q	10	: Research Ready Network	Q
05	: Threats	Q	11	: Research Interests	Q
06	: Care Home Research	Q	12	: RICH Voices	Q



Introduction



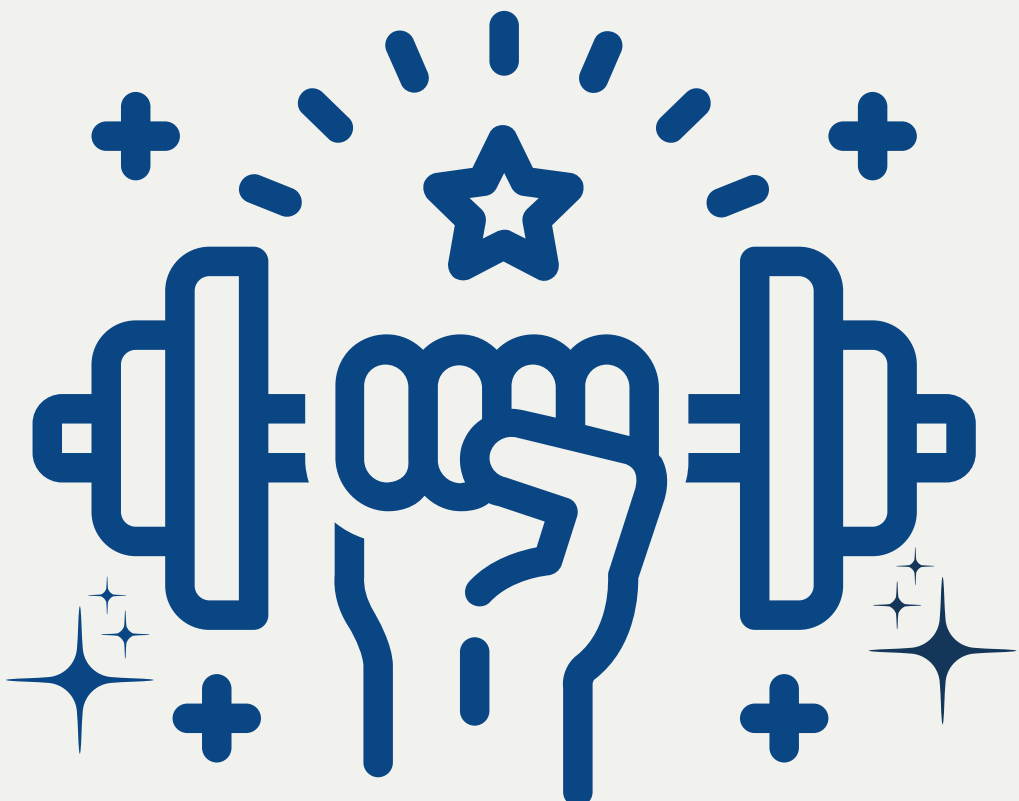


Analysis Presentation

⋮

Strengths

🔍



Our Team

All of the team are registered nurses with professional experience working with care home staff and/or in care homes.



Building Relationships with Care Home Staff

The main responsibility of Clinical Studies Officers is building and maintaining relationships with care home staff.



RICH Voices PPI group

Patient and Public Involvement group called RICH Voices have developed an image gallery, introductory video about ENRICH Scotland and offered feedback to researchers.

⋮ Weaknesses 🔍



Governance

More work is required to develop and streamline the ethics review process for social care research. This can be off-putting for researchers and funders.



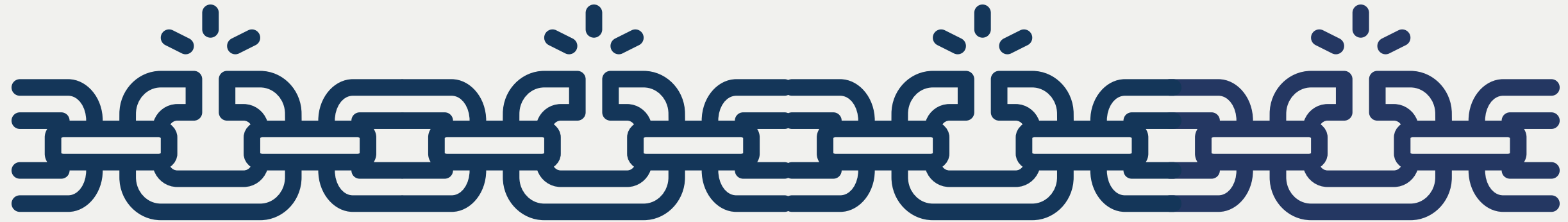
Capacity

High staff turnover and chronic staff shortages across the care home sector impact capacity for research involvement.



Diversity

We aim to promote rural communities to researchers, however, those care homes do not yet have equitable access to research opportunities.



⋮ Opportunities 🔍



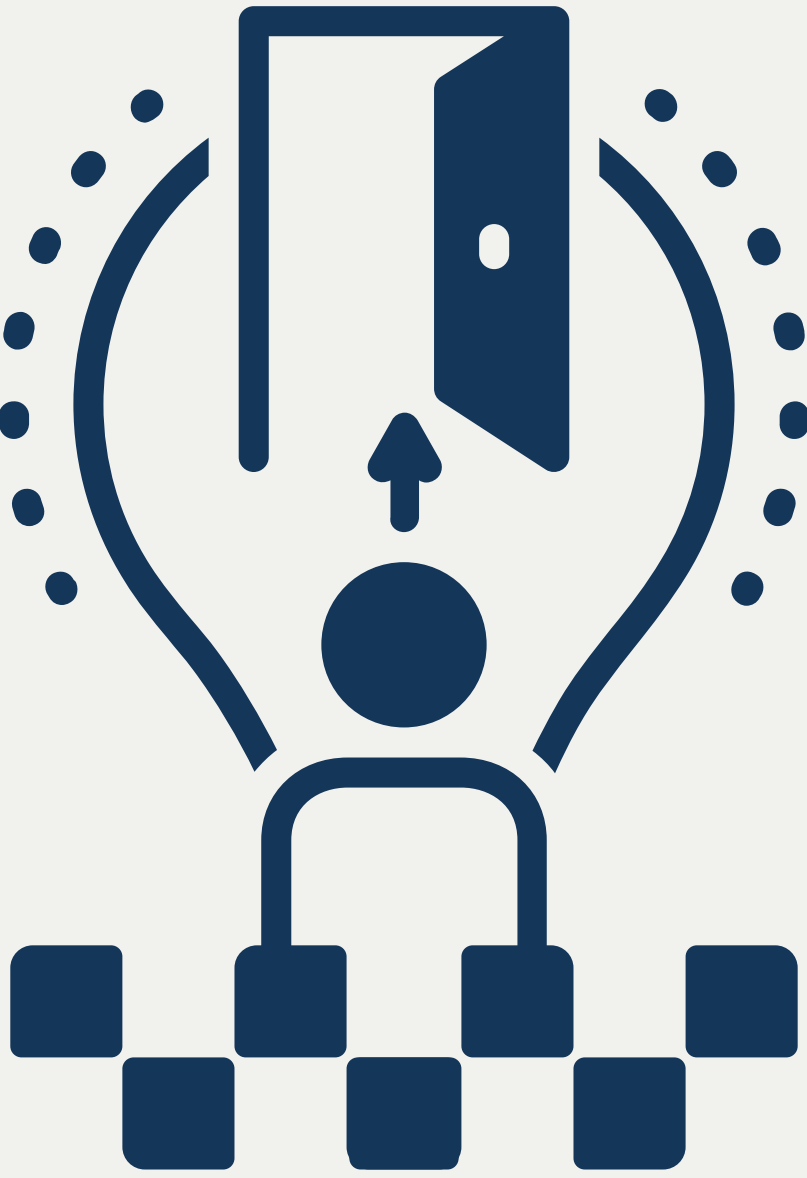
New Knowledge and Skills

Research involvement brings opportunities for care home staff and relatives to gain new knowledge and skills.



Share Experiences

Many research methods allow care home staff, residents and relatives to share their experiences with a wider audience.



Potential to Improve Care

Research related to care home work and life often aims to work towards improving care for residents.



Influence Future Practice

Research involvement can influence future guidelines and protocols that will inform wider practice across the sector.

⋮

Threats

🔍



Repetition

Researchers have relied on using similar methods, which has created data fatigue among care home staff.



Maintaining Momentum

Research can be a lengthy process and maintaining momentum with people in care homes who support change and improvements can be difficult.



Pandemic

The COVID-19 pandemic has changed working practices, workforce demographics and resident characteristics. The sector is now going through a significant adjustment period.



Funding

Our funding is currently reviewed annually. This creates a certain level of uncertainty and can limit medium-long term capacity building.

∴ Care Home Research Q



Scottish Research (n=32)

Dundee University
Edinburgh Napier University
Glasgow Caledonian University
University of Dundee
University of Aberdeen
University of Edinburgh
University of Glasgow
University of St Andrews
University of Stirling
University of Strathclyde
University of West of Scotland



English Research (n=16)

Birmingham City University
City University of London
De Montfort University
Imperial College London
Kings College London
Liverpool John Moores University
Northumbria University
University of Cardiff
University of East Anglia
University of Leeds
University of Salford

⋮ Research Support Process Q

1

Research
Team
Complete
Pro forma

2

Senior Team
Review
Study

3

CSO Share
Study Details
with Care
Home
Managers

4

Research
Activity

5

Feedback
and Share
Findings



Understanding Retention in Care Homes (CHURN)



A collaboration with ENRICH Scotland, Edinburgh Napier University and NHS Lothian

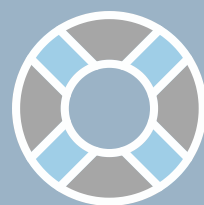
We interviewed
10 managers



A Perfect Storm.



Improving retention
starts up stream.



Keeping staff onboard
and afloat.

Reducing the CHURN

- Practice based opportunities
- Working collaboratively
- Collective action



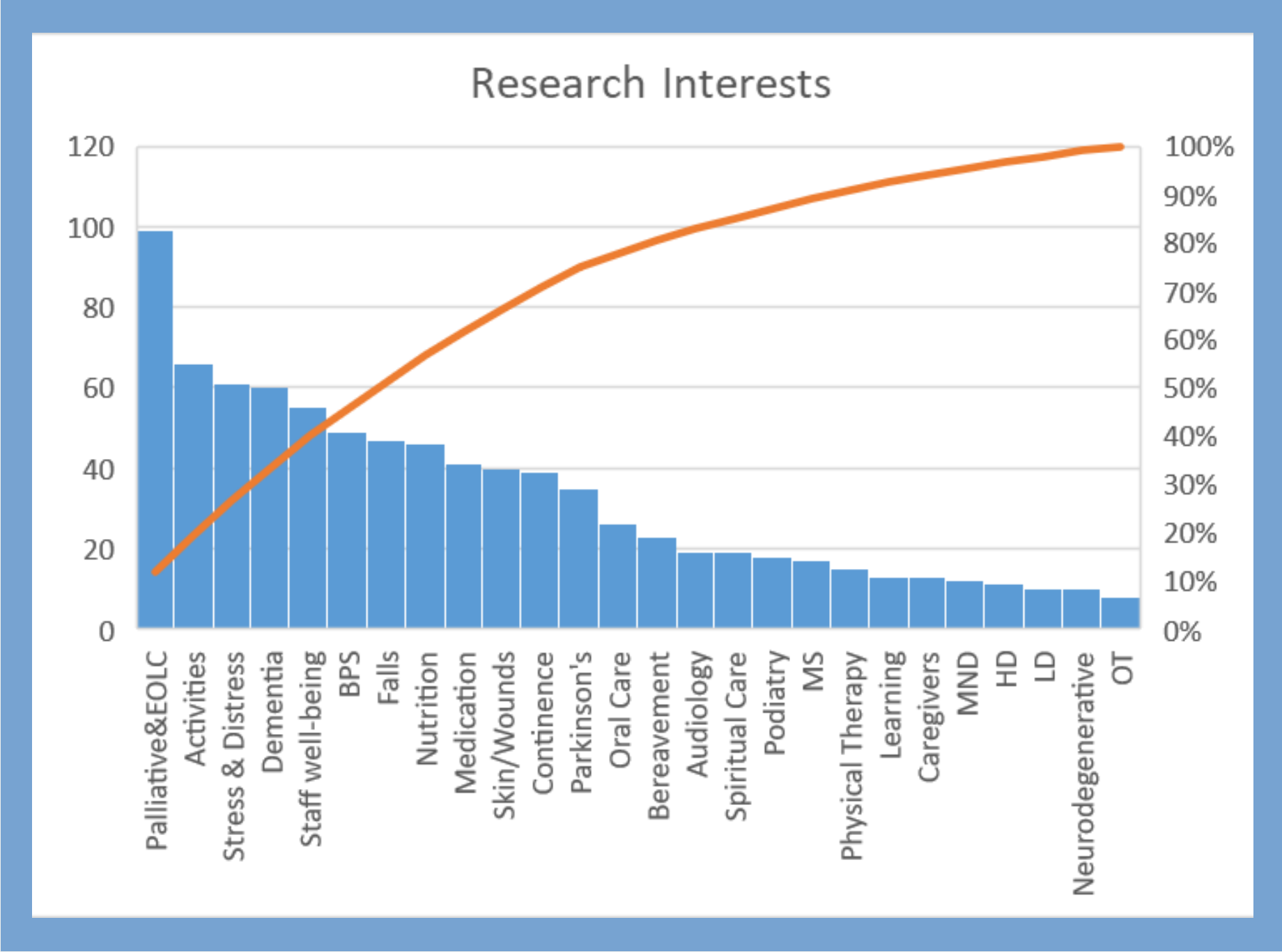
Current Studies



- **Priortisation of Research Interests:**
 - **Seeking Answers for Care Home Uncertainties: Gathering, Organising and Prioritising Care Home Staff's, Residents' and Relatives' Uncertainties (The SEARCH-U study)**
 - **The Palliative and End of Life Care Research Priorities Project**
 - **Our own survey**
- **Exploring Drug Use of People in Later Life: A UK Based Study**
- **Exploring advance care planning education delivered by hospice specialists to care home staff in post pandemic conditions: A mixed method survey**
- **The Experiences (benefits and limitations) of Living in a Care Home**

Research Ready Care Homes Q

79 Survey Responses (47%)

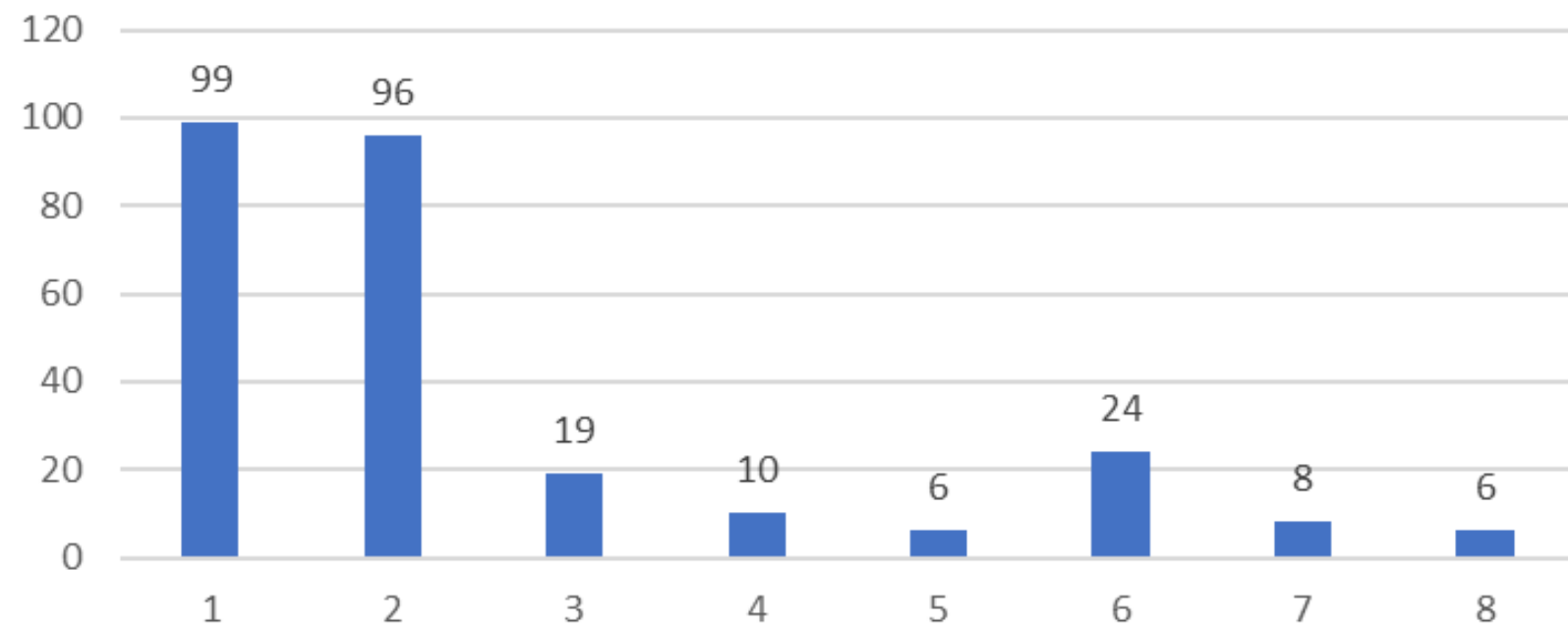


Research Ready Care Homes Q

269 Registrations

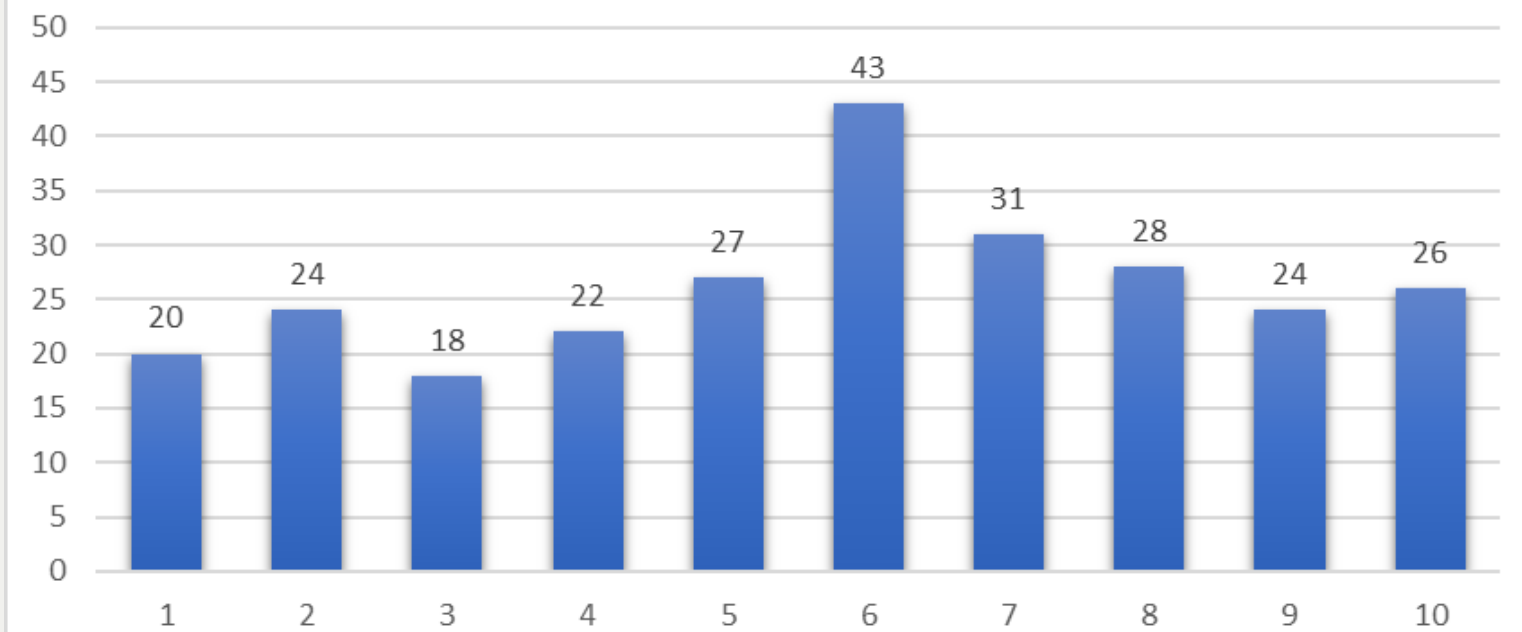
26% of Scotland

Care Homes by Postcode Urban Rural Score



1: Most Urban - 8: Most Rural

Care Homes by Postcode Index of Multiple Deprivation Score (Decile)



1: Most deprived - 10: Least deprived

Associated Publications

- Birt L; Lane K; Corner J; Sanderson K; Bunn D. (2023). Care-home nurses' responses to the COVID-19 pandemic: managing ethical conundrums at personal cost: a qualitative study. *J Nurs Sch.* 55:226–238. <https://doi.org/10.1111/jnu.12855>.
- Bradshaw A, Ostler S, Goodman C, Batkovskyte I, Ellis-Smith C, Tunnard I, Bone AE, Barclay S, Vernon M, Higginson IJ, Evans CJ, Sleeman KE. Provision of palliative and end-of-life care in UK care homes during the COVID-19 pandemic: A mixed methods observational study with implications for policy. (2023). *Front Public Health.* Mar 14;11:1058736. doi: 10.3389/fpubh.2023.1058736.
- Burgher, T., Shepherd, V. & Nollett, C. Effective approaches to public involvement in care home research: a systematic review and narrative synthesis. (2023). *Res Involv Engagem* 9, 38. <https://doi.org/10.1186/s40900-023-00453-2>
- Burton, J.K., Drummond, M., Gallacher, K.I. et al. Listening and learning: a qualitative study of Scottish care home staff experiences of managing COVID-19 between March 2020–August 2022. (2023). *BMC Geriatr* 23, 544. <https://doi.org/10.1186/s12877-023-04251-z>
- Chapman-Wright J, Parnell SA, Bunn D et al. (2022) Perspectives: Nurses in care homes as advisors in research: benefits for all? *J Res Nurs.* Vol 27(4), pp401-405. <https://doi.org/10.1177/17449871221103839>
- Cowdell, F., Heague, M., & Dyson, J. (2023). Barriers and facilitators to skin hygiene care and emollient use in residential care homes: Instrument design and survey. *International Journal of Older People Nursing*, 18, e12550. <https://doi.org/10.1111/opn.12550>
- Fang, M. L., Cranwell, M., White, B., Wylie, G., Wong, K. L. Y., Harter, K., Cosgrave, L., Moulton, M., Fulton, R., Sixsmith, A., & Sixsmith, J. (2023). Aging-in-Place at the End-of-Life in Community and Residential Care Contexts. University of Dundee. <https://doi.org/10.20933/100001274>
- Finucane AM, Hulbert-Williams NJ, Swash B, et al. (2023). Feasibility of RESTORE: An online Acceptance and Commitment Therapy intervention to improve palliative care staff wellbeing. *Palliative Medicine.* 37(2):244-256.
- Gibson, G., McCabe, L., Wilson-Nash, C., et al. (2022). Evaluation of the 'Connecting Residents in Scotland's Care Homes' Programme. https://tec.scot/sites/default/files/2022-09/CRSCH%20Executive%20Summary_FINAL.pdf
- Johnston, L. (2023). Care homes: Data and digital readiness. *Open Access Government*, Jan 2023, 106-107.
- Law E, Ashwroth, R., Killin, L., Connelly, P. (2021) Motivating and constraining factors for research participation in Scottish care homes. *Nursing and Residential Care* 2021 23:4, 1-7
- Macgregor A, McCormack B, Spilsbury K, Hockley J, Rutherford A, Ogden M, Soulsby I, McKenzie M, Hanratty B, Forbat L. (2023). Supporting care home residents in the last year of life through 'Needs Rounds': Development of a pre-implementation programme theory through a rapid collaborative online approach. *Front Health Serv.* 9;2:1019602. doi: 10.3389/frhs.2022.1019602.
- Philip M Bath, Jonathan Ball, Matthew Boyd. Et al. (2022). Prophylactic Treatment of COVID-19 in Care Homes Trial (PROTECT-CH) MedRxiv <https://doi.org/10.1101/2022.08.29.22279359>
- Schoultz, M., McGrogan, C., Beattie, M. et al. (2022) Psychological first aid for workers in care and nursing homes: systematic review. *BMC Nurs* 21, 96. <https://doi.org/10.1186/s12912-022-00866-6>
- Susan D Shenkin, Lucy Johnston, Jo Hockley, David A G Henderson, (2022). Developing a care home data platform in Scotland: a mixed methods study of data routinely collected in care homes, *Age and Ageing*, Volume 51, Issue 12, , afac265, <https://doi.org/10.1093/ageing/afac265>

⋮ **RICH Voices** 🔍



PPI Input Requests

Like many 'patient and public involvement' groups, one of our primary aims is to review the types of research and research-related activities that Care Homes are being asked to participate in.



Share Experiences



We aim to involve people living and working in care homes in research-related activities that are meaningful for them. We have the option of joining RICH Voices core team, RICH Voices interest register and our mailing list.



Accessible Research

Research is often inaccessible- it can be full of jargon, hard to get access to, and difficult to apply to your everyday practice. We are co-creating a new platform on our website which will include lay summaries of research, films, podcast episodes etc. A preview will be available in the new year.

Co-creation of our Film



We have created a film about 'research in care homes' to help raise awareness and increase confidence in talking about care home research. We have also co-created a podcast that explores care home research, this is currently in production.



Research In Care Homes (RICH) Voices is led by Rosie Ashworth and Anna Crawford. If you would like to hear more about our work get in touch on: tay.ppipartners@nhs.scot





Care Home Managers Research Forum

Are you a care home manager in Scotland who is interested in enabling research in your care home? If so, join us via Teams at our next Care Home Managers Research Forum to hear more about current research opportunities.

If you are a registered nurse, attendance could count towards CPD hours for revalidation.



29 November 2023



2.30pm - 3.30pm



Teams

EMAIL TAY.ENRICHSCOTLAND@NHS.SCOT TO REGISTER

Speaker
Reena Devi

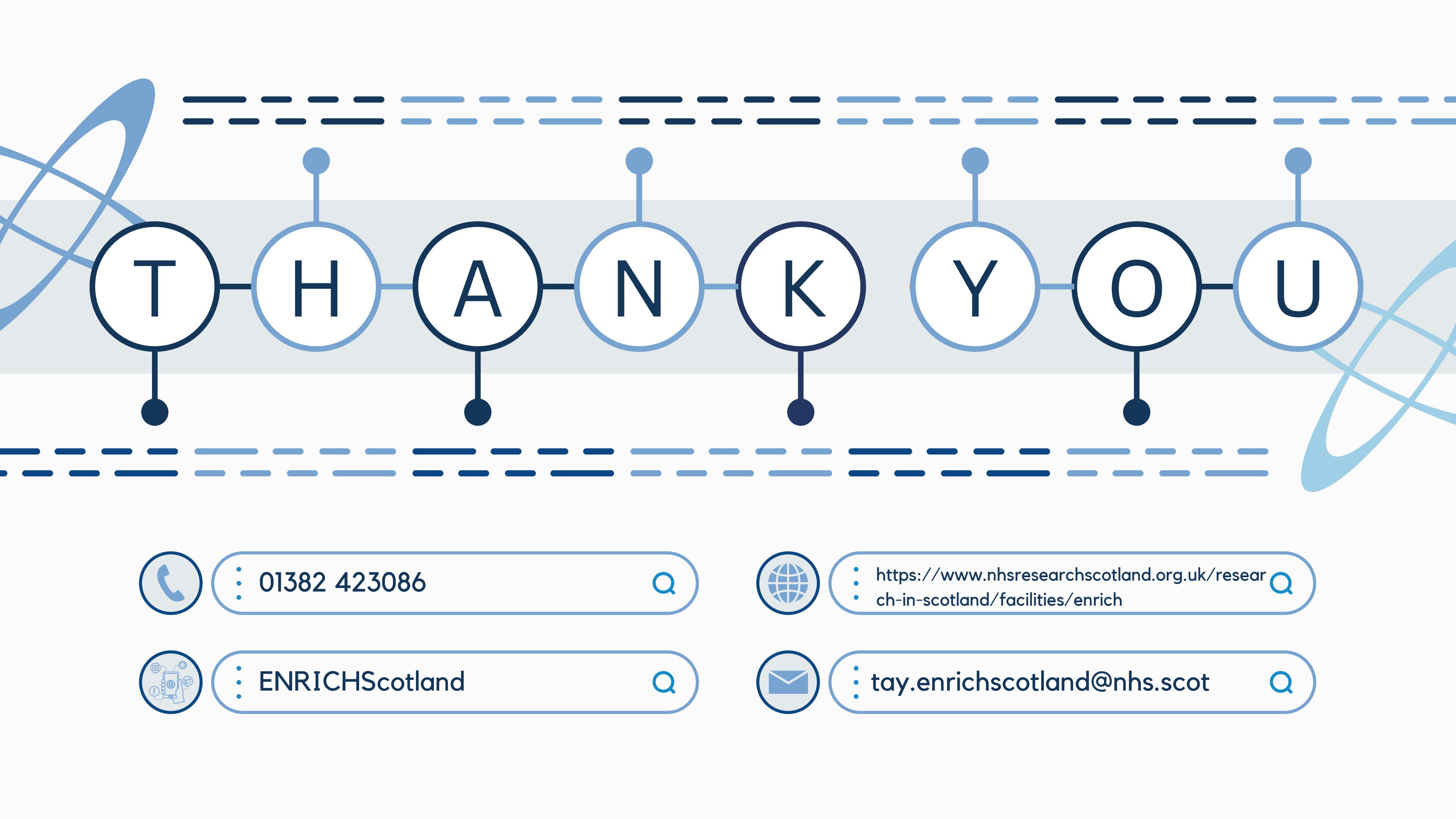


Speaker
KIRSTY HAUNCH



Speaker
ASENA TURKMEN





T H A N K Y O U



01382 423086



<https://www.nhsresearchscotland.org.uk/research-in-scotland/facilities/enrich>



ENRICHScotland



tay.enrichscotland@nhs.scot

