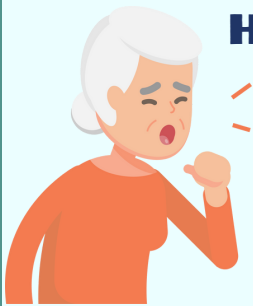
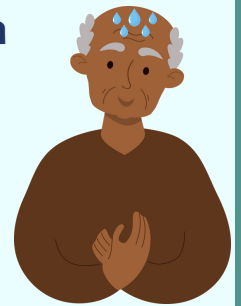


# Communication is Vital

## For the Treatment and Prevention of Illnesses and Infection



**Have you seen or heard any symptoms in your residents during your shift?**



### Communicate!

**This allows the resident/s health to be monitored by all and any required action to be taken as soon as possible.**



- Ensure you have informed the person in charge of your shift.
- Where possible inform others on your shift working with the same resident/s.
- Ensure the person in charge of the next shift as well as the staff are informed.

### 2 or More Residents with the Same Symptoms

#### Think Possible Outbreak



- Are the residents linked somehow? - i.e have they had contact with each other or shared the same space?
- Consider if they both have the same infection.
- Share this information with other staff, especially the person in charge.
- Consider if you need to contact Health Protection.