

Belt & Braces: NHS Lothian Care Home Programme Team

Maggie Byers-Smith, Lead Nurse, QI & Standards

Donald Boyd, Programme Manager

Care Home Programme Team, NHS Lothian

Background

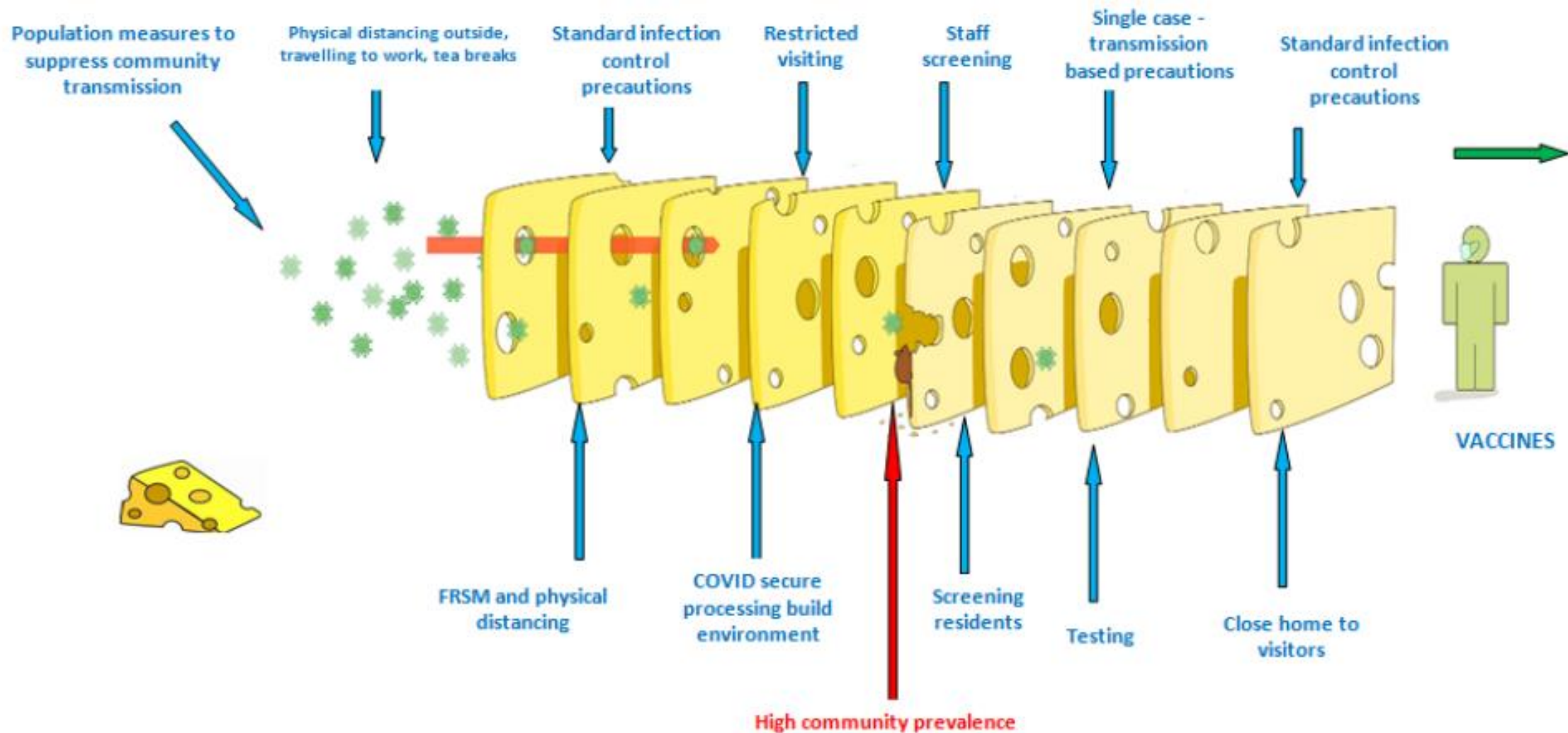
17th May 2020

SG letter new and additional support and oversight arrangements for Care Homes

18th May 2020

Variation in role and responsibility of Executive Nurse Director to include Nursing leadership, support and guidance

- Leadership
- PPE, Infection Prevention & Control
- Care Standards and Practice in Care Homes
- Mutual Aid
- Education and Training
- Assurance/Support Visits

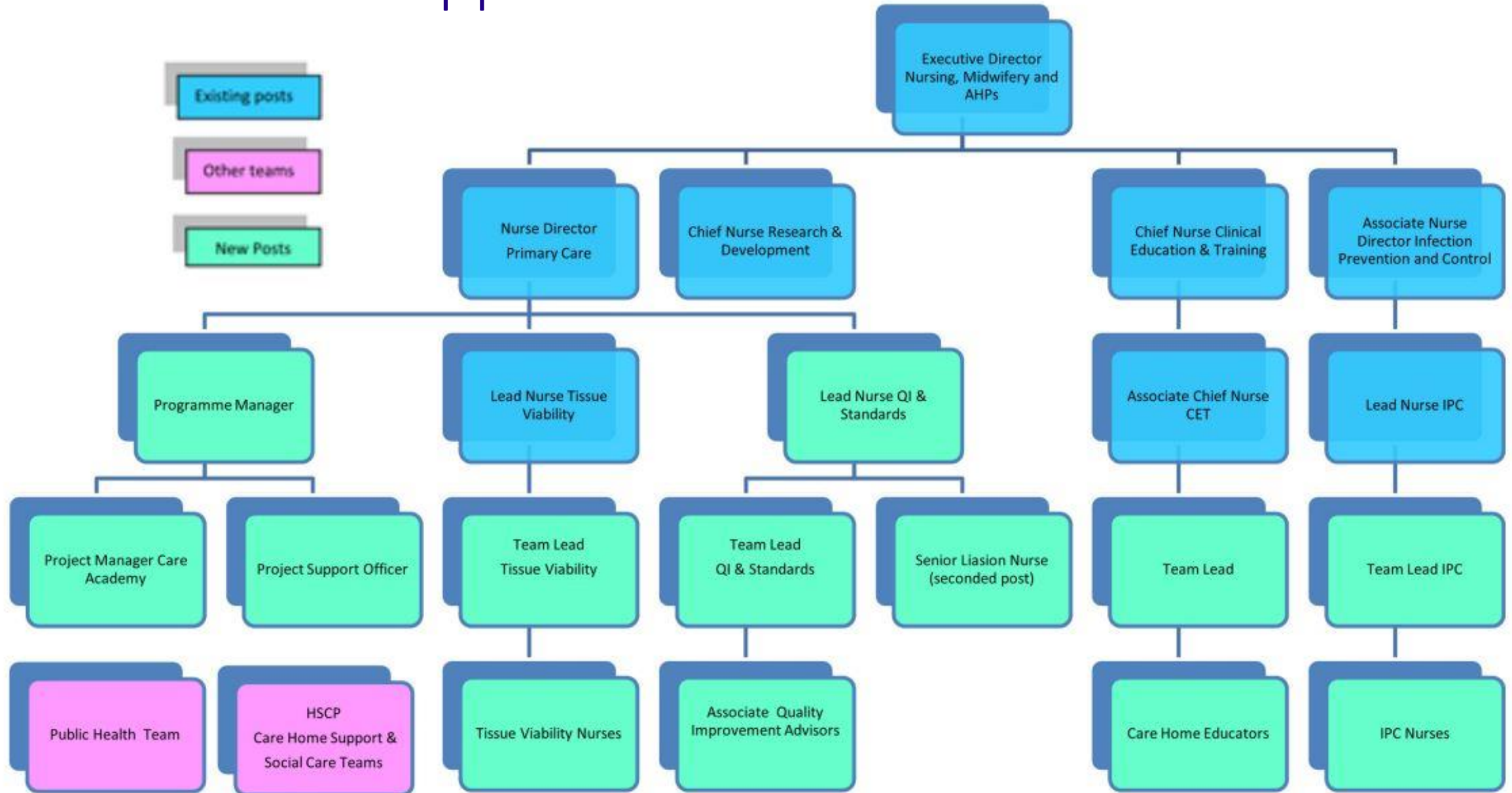


Each intervention (layer) has imperfections (holes). Multiple layers improve prevention success.

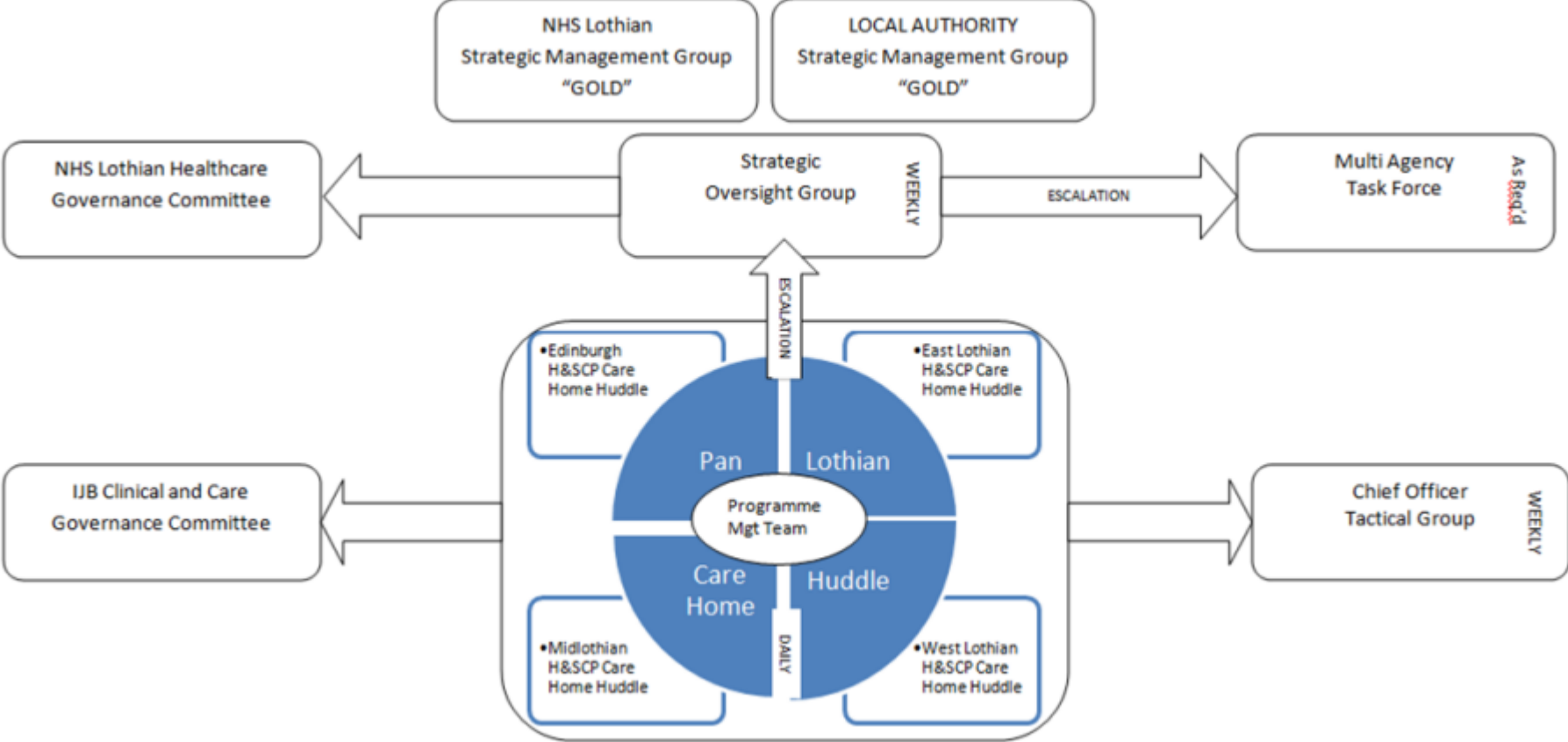
Based on COVID-19 version by Ian M. Mackay (virologydownunder.com).
 Ref: Reason J (1990) Human Error, Cambridge University Press
 Adapted with permission from Professor Jacqui Reilly

The 'Swiss Cheese' COVID-19 defences in care homes recognising that no single intervention is perfect at preventing spread
 CARE HOME REVIEW: A Rapid Review of Factors Relevant to the Management of Covid-19 in the CH Environment in Scotland

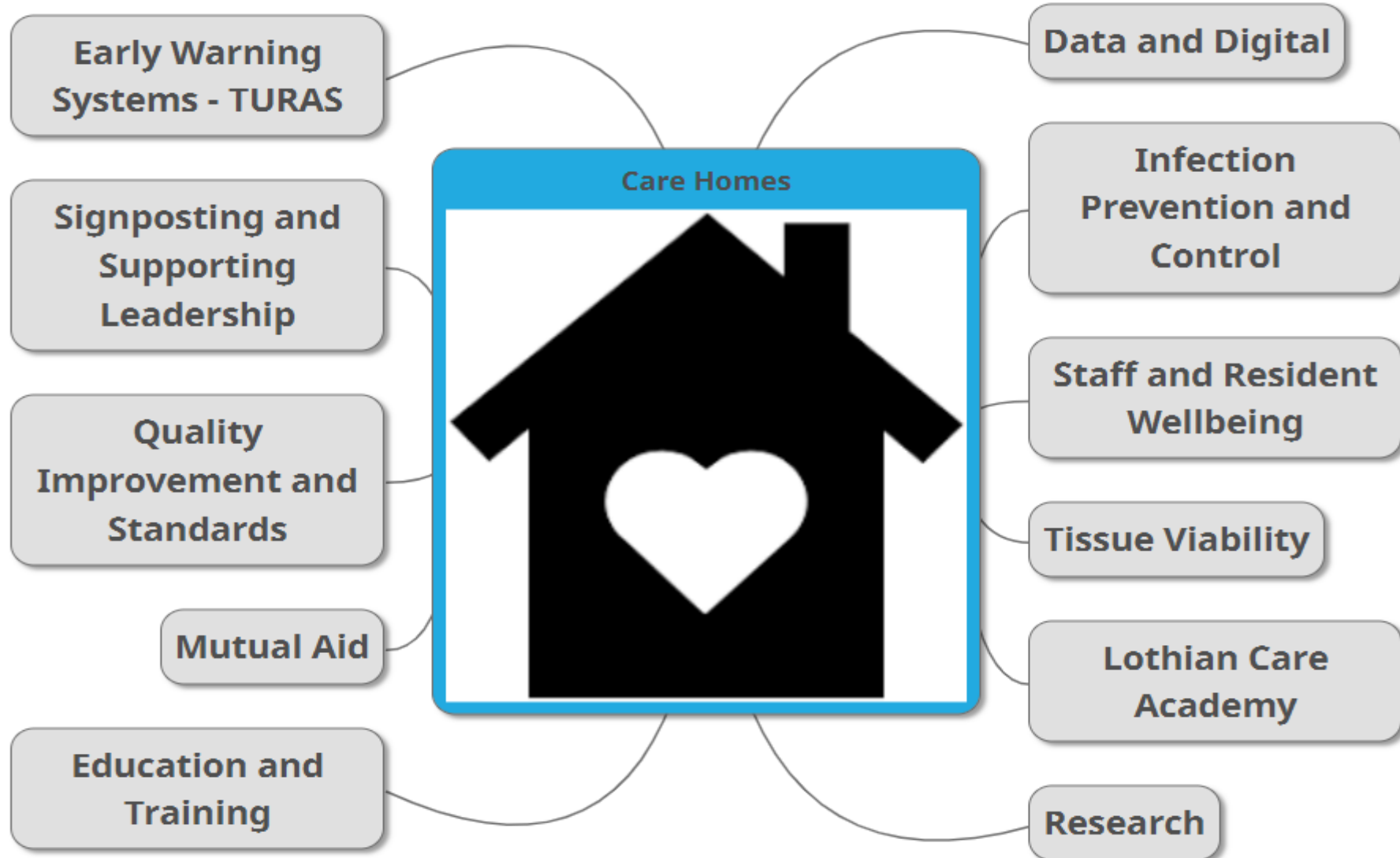
Care Home Support Structure



Lothian Care Home Governance & Escalation



WORKSTREAMS



FUNDED PROJECTS

	Description	Workstream
Tissue Viability	Wound Assessment App	Tissue Viability, Quality Improvements & Standards
ELHSCP Care Home Team	New laptops with SIM cards for each Nurse Practitioner (NPs)/Advanced Nurse Practitioner (ANP)	Data & Digital, Quality Improvements & Standards
ELHSCP Care Home Team	Simulated blood pressure arm. Manual blood pressure cuff and sphygmomanometer	Quality Improvements & Standards, Education and Training
Edinburgh Health and Social Care Partnership	Develop and introduce improved personal care plans in care homes	Quality Improvements & Standards, Education and Training
NHSL Clinical Education and Training (CET)	Request for equipment to support CET and Care Home Support Team	Quality Improvements & Standards, Education and Training
Tissue Viability	Pressure mapping technology, Teaching aids	Quality Improvements & Standards, Tissue Viability

	Description	Workstream
NHS Lothian Adult Speech and Language Therapy Service	Dedicated speech and language therapist	Staff and Resident Wellbeing, Quality Improvements & Standards, Education and Training
EHSCP Diabetes Specialist Nursing Team	To improve diabetes care for those residing in care homes	Staff and Resident Wellbeing, Quality Improvements & Standards
Corporate Nursing – Supplementary Staffing	Implementation of a Staff Bank for Care Homes	Quality Improvements & Standards, Mutual Aid
Midlothian HSCP	Improve anticipatory care planning (ACP)	Staff and Resident Wellbeing, Quality Improvements & Standards
West Lothian Care Home Team	Provide dedicated Bladder and Bowel specialist nurse	Staff and Resident Wellbeing, Quality Improvements & Standards
Research	Research and collaborative appreciative inquiry led quality improvement in Lothian care homes	Staff and Resident Wellbeing, Quality Improvements & Standards, Mutual Aid

	Description	Workstream
NHS Lothian Older People's Psychology Service (LOPPS)	Care Home Staff Wellbeing Resource project team to co-ordinate the development, trial and evaluation of a stepped staff support package	Staff and Resident Wellbeing, Quality Improvements & Standards, Research
Care Home Sensory Screening and Support project	Audiological interventions and low vision functional assessments to citizens at the key point of moving to live in a care home	Staff and Resident Wellbeing, Quality Improvements & Standards
Lothian Care Academy	Training materials for the Lothian Care Academy programme	Quality Improvements & Standards, Lothian Care Academy, Tissue Viability, Education and Training
Long Term Conditions Programme	Care home falls trainer/educator	Staff and Resident Wellbeing, Quality Improvements & Standards, Education and Training
Long Term Conditions Programme	to improve falls and frailty support and outcomes for care home residents across Edinburgh	Staff and Resident Wellbeing, Quality Improvements & Standards, Education and Training
Arts Therapies Service (hosted by REAS) - Midlothian HSCP	Develop a model of Music Therapy for older adults in Care Homes in Midlothian	Staff and Resident Wellbeing, Quality Improvements & Standards

Future context

- Continue to work in partnership to support oversight arrangements
- Continue to strengthen existing sector, partnership and key stakeholder relationships
- Support the ambition and recommendations identified in the Healthcare Framework for Adults Living in Care Homes
- Continue to invest in and deliver the priorities for the Lothian Care Academy
- Support and deliver the 11 workstreams identified by staff
- Support and share learning from the 18 funded projects
- Continue to share learning with stakeholders across Lothian, regionally and nationally including Quality Improvement projects
- Facilitate the Care Home – Community of Practice

Thank you

Happy to take any questions or
comments