

My Health, My Care, My Home
**Healthcare Framework
for adults living in care
homes**

Care Homes and Care at Home Conference

22 September 2022

Scottish Government

Healthcare framework for adults living in care homes
My Health - My Care - My Home



June 2022



Context

- + Care Homes are where people live.
- + Changing demographic in care homes for older adults.
- + Appreciation at times that healthcare is not as seamless and integrated as it could be.
- + Holistic view that puts the person in the centre regardless of type of care home or who is delivering care/support.
- + Much to celebrate/recognise in the care sector.

Programme of Engagement



29
Engagement
Events

674
Stakeholders
participated

44 Residents
and Families

4 Focus
Groups
created

508 Online
survey
responses

73 Best
practice
returns

NURTURING ENVIRONMENT



MULTI-DISCIPLINARY TEAMS



Personal Plan



ANTICIPATORY CARE, SELF-MANAGEMENT + EARLY INTERVENTION



Healthcare framework for adults living in care homes

My Health · My Care · My Home

DATA · DIGITAL + TECHNOLOGY



SUSTAINABLE + SKILLED WORKFORCE



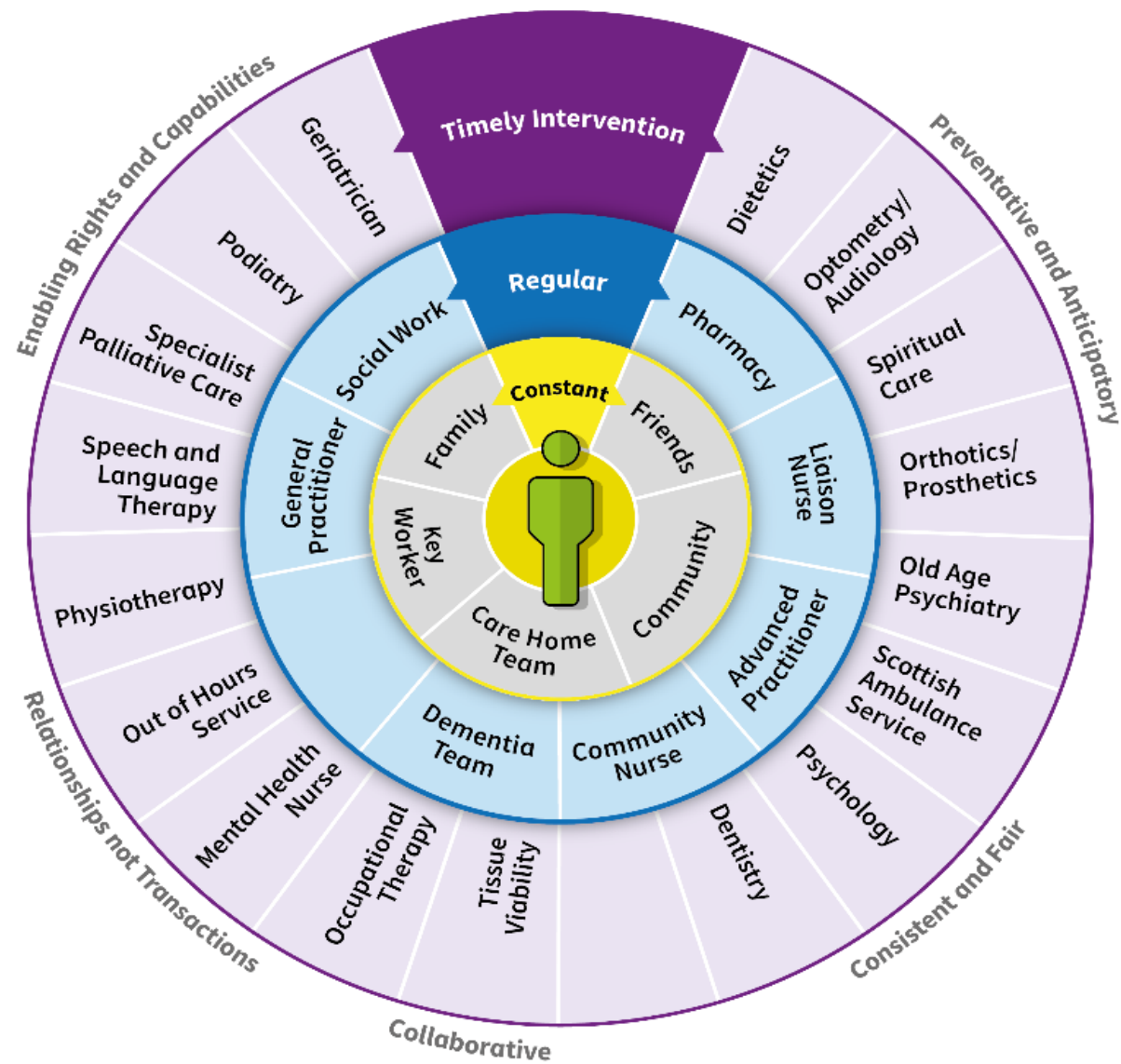
URGENT + EMERGENCY CARE



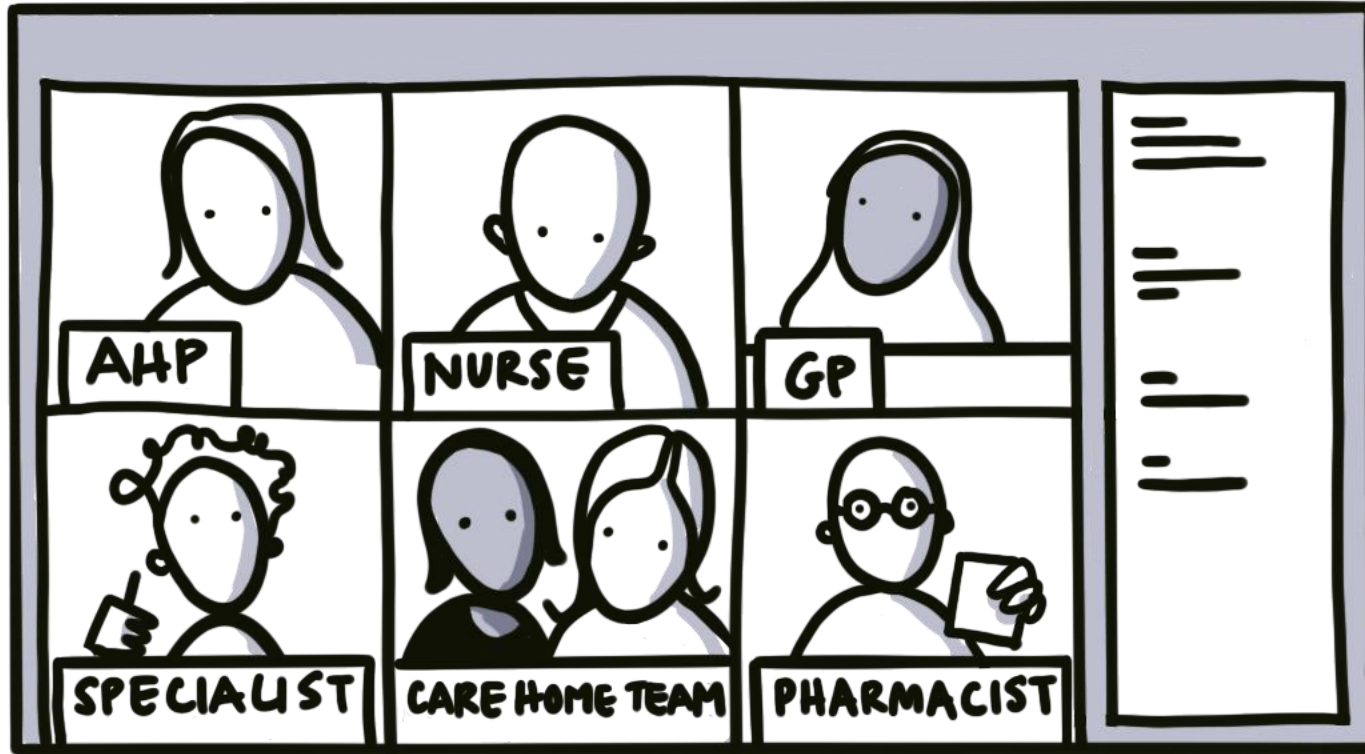
PALLIATIVE + END OF LIFE CARE







Regular MDT Meetings



 Timely access

 GP Practice +
Care home work
closely

 Planned
Meetings

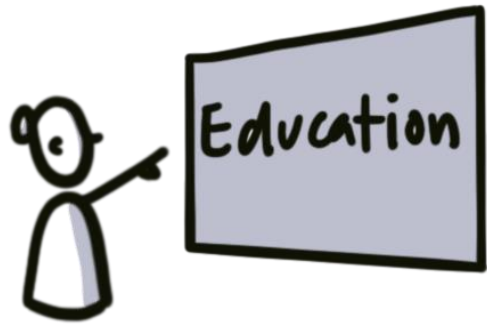
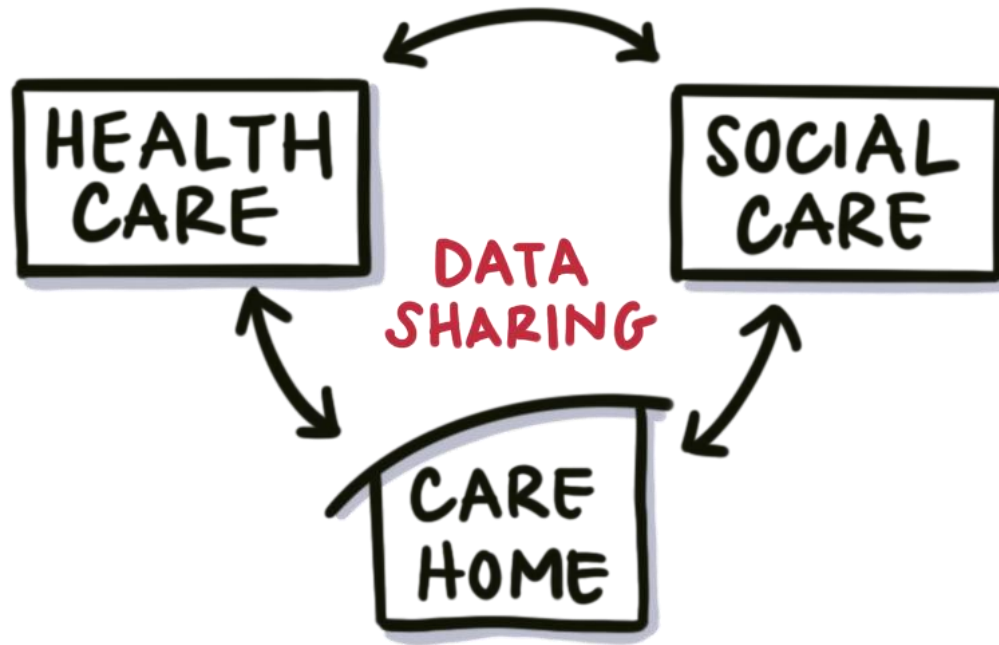
① Involve family + friends

② Have meaningful conversations

③ Share plan appropriately

④ Review decisions regularly





What are we doing now?

- + Working with SG colleagues to influence their work and commitment to the framework.
- + Setting out what governance looks like.
- + Scoping out a detailed communication & engagement plan
- + Developing a robust monitoring & evaluation plan
- + Undertaking a thematic analysis of the recommendations
- + Scoping out improvement projects
- + Planning webinars for HSCP and Care Home managers

Our ask of you

How can we best work together to implement the recommendations within the Framework and share details of local or national initiatives?

How can you, in your own role, implement the recommendations in the Framework?

How can we as a collaborative group better understand and measure the impact the Framework is having on those living and working in care homes?

Keeping In Touch

Carehomeshealthcare@gov.scot

Bryan.Little@gov.scot

Paul.Baughan@gov.scot

Thank You